



Resource Center

Historical Perspectives

Port Washington



Port Exploreum

Historical Society



1860 Lighthouse

VOLUME 29, ISSUE 3

SUMMER 2018

MARGUERITE SCHOMMER: A LUXEMBOURG LIGHT KEEPER IN PORT WASHINGTON

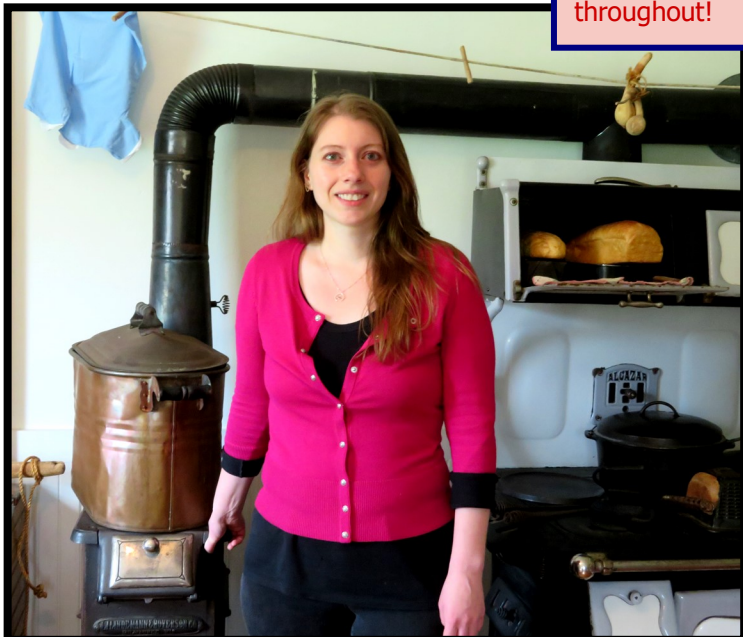
The title of the program for the July Quarterly Meeting is *Marguerite Schommer: A Luxembourg Light Keeper in Port Washington*. Sarah Smith, our in-house maritime consultant and curator, will present the story of the challenges that the newly widowed 35-year-old mother of seven young children, 2 to 10 years old, had to overcome while tending a light and finishing the re-building of the *1860 Lighthouse*.

The Wednesday, July 18, meeting will be held at the Port Washington State Bank Lake-view Room in the Wilson House at 7:00 pm. The doors open at 6:30 pm. There will be a short *Society* update prior to the program.

Refreshments will be provided. The public is invited to attend this informative account of Port Washington's history.

Mary Flierl,
Program Coordinator

Newsletter's now
more computer
friendly—click on
hyperlinks
throughout!



Sarah Smith, Maritime consultant and Curator

Inside this issue:

<u>President's Message</u>	2
<u>Executive Director Update</u>	3
<u>1860 Light Station News</u>	3
<u>Port Exploreum Report</u>	4
<u>Program in Maritime Heritage Update</u>	4
<u>Franklin St. Walking Tour</u>	4
<u>Welcome Educational Coordinators</u>	5
<u>The Men and Women of World War I</u>	6
<u>Storyboards on the Harborwalk</u>	8
<u>WWI Exhibit Opening Successful</u>	8
<u>New Exhibit Open at Port Exploreum</u>	9
<u>Volunteers Wanted</u>	9
<u>Donations and Memorials</u>	10
<u>PWHS Legacy Society Membership Form</u>	11

Board of Directors

Jeff Morgan, President
 Bill Schanen III, Vice Pres.
 Angela Sikowski, Treasurer
 Kay Goodwin, Secretary
 Missy Hockerman
 Kurt Blum
 Allon H. Bostwick
 Mike Didier
 Robert Henkle, Jr.
 Mark Koenig
 Bill Moren
 Jackie Oleson
 James J. Pauly
 Jack Rooney
 Daniel Solorzano

PWHS Exec. Director

Wayne Chrusciel

Resource Center Dir.

Jackie Oleson and Geri Zehren

Light Station Museum

Rick Smith, Director
 Kathie Gordon and
 Linda Nenn, Assist. Directors

Volunteer and Marketing Coordinator

Kathie Gordon

Newsletter

Ann Flierl
 Michele Weiland

Quarterly Programs

Mary Flierl

Membership and Special Events

Amy Clark

Contact information

portwashhistsoc@att.net
 P. O. Box 491
 205 N. Franklin Street
 Port Washington, WI 53074
 RC: 262-268-9150
 LS: 262-284-7240
 Exploreum: 262-284-2406

Websites

portwashingtonhistoricalsociety.org
portexploreum.com

Historical Perspectives

is published four times a year

President's Message

Dear Members,

I previously reported that we were close to having the ownership of the *1860 Light Station* transferred from the City of Port Washington to the *Society*. A communication from the National Park Service erroneously gave us that impression. An attempted transfer at this point in time would open up the *Light Station* to bids from other interested organizations, similar to the process that the City went through to acquire the Pier Head Light.

As an alternative, we are working with the City to secure a long term lease of the *Light Station* to bring us certainty for our planning and continued investment in the building.

I would like to thank Rick Smith for his many years of contributions to the *Society* and the *Light Station*. After many years of active involvement in the *Society* and the *Light Station*, including serving as Co-Chairman of the Restoration Project and Co-Director of the *1860 Light Station*, Rick has stepped down as Co-Director of the *Light Station*.

Rick's passion, commitment, and endless work have all contributed greatly to making the *Society* and the *Light Station* what they are today. His year-round dedication to the restoration, maintenance and operation of the *Light Station* has been an incredible example of what volunteering can be. Rick has been the face of the *Light Station* for many years. We look forward to him sharing his vast knowledge of the *Light Station*, the *Society*, and the Great Lakes for years to come.

The *Night at the Light*, a wonderful party and celebration of the *1860 Light Station*, will be held on July 28. A *Lake Michigan Luau* will feature tours of the *Light Station* and *Museum*, food, beverages and live music. This year the *Night at the Light* will be a larger event with expanded food and beverage offerings. We will also have an expanded footprint with the use of the adjacent lot. Plan to attend and bring friends. It is a great opportunity to introduce friends to the *Light Station* and the *Society*.

Planning for the 2018 *Society Gala* is well underway. The *Gala* will be held again this year at *The Family Farm Event Loft* in Grafton on November 3. The theme is *Home for the Holidays/Celebrating Harvest and History on the Farm*. Mark your calendars and plan to attend. It promises to be a wonderful evening of visiting with fellow members and others while celebrating the amazing accomplishments of the *Society* and raising funds to continue our work.

If you are interested in being a sponsor for *Night at the Light* or the 2018 *Gala*, please contact me for information at jmorgan@alliedinsulation.com or at 414-491-9815.

Our need for volunteers continues. All three properties need volunteers in various capacities. Volunteering will help the *Society* fulfill its mission, give you an opportunity to get to know fellow members better and meet visitors to our city. You don't have to be a member of the *Society* to volunteer so encourage family, friends and neighbors to volunteer. Volunteer today!

Jeff Morgan, President
 Port Washington Historical Society
 Board of Directors



WELCOME NEW MEMBERS!

Kathleen Bink
 Mark Goeden Family
 Charlie Mayhew
 Matthew Poje Family
 James Poull
 William Provis

EXECUTIVE DIRECTOR UPDATE

One aspect of being Executive Director that I both love and hate is that nothing stays the same. This is a good thing in that we are always looking for ways to improve, but it also creates a great deal of tension within our organization to make things happen.

Between the Board, the staff and the volunteers, I am always being challenged to improve the operations of the *Historical Society*, which in the end provides the visitors to our exhibits and buildings a better and more memorable experience.

I know to some it may seem like we are always making changes, but in the end we are always striving to make sure that the *Historical Society* is meeting its mission and vision, and continues to be a leader in the Port Washington community.

It is both overwhelming and humbling to see the number of members who tirelessly volunteer their time to keep the *Society* operating on a day to day basis, as well as to provide the necessary leadership needed to guide the *Society* forward.

With all of that being said, we have more changes coming this summer. At the *Port Exploreum* there will

be an upgrade installed on the Lake Michigan Table, with the current two sensors being replaced by four sensors and a new camera. We feel this will make the table more reactive and provide a better experience.

There have been some landscaping changes done at the *1860 Light Station*, and we are investigating the possibility of adding air conditioning to the building.

We are always looking for ways to upgrade and expand the computers at the *Resource Center* so as to provide the volunteers who handle our collections the best possible tools for their work.

And finally, we are approximately midway through the project to launch a new website for the entire *Historical Society*. Currently there are three different sites, and while we try to link the three together, we have limited success in delivering a consistent message. This new site will be launched by the end of summer. We will review with everyone at our annual meeting in October.

Wayne Chrusiel, Executive Director

Port Washington Historical Society's Mission Statement:

To create opportunities for inspirational discovery through preservation, education and exploration of the Port Washington area's history and its maritime environment with sustainable programs that honor the past while looking to the future.

2018 PWHS GALA

The *Port Washington Historical Society's* Gala is the main fundraiser for the *Society*. This year's Gala will be held at the *Family Farm* on Saturday, November 3.

The theme is *Home for the Holidays/Celebrating History and Harvest at the Farm*. Enjoy a comfortable, casual evening of fabulous food, drinks and entertainment. The silent and voice auctions will be a great way to start your holiday shopping.

Call Amy or Kathie at the *Port Exploreum* for more information: 262-284-2406. Invitations will be going out soon!



1860 LIGHT STATION NEWS

It's hard to believe that the Light Station has already been open for a month! We started the season off with a bang, as attendance has been great.

Spring cleaning included sprucing up the yard, and the curb appeal was enhanced by adding some beautiful planters. The efforts of Todd Gordon, Eric Oleson, Allon Bostwick and Geri Zehren have made the *Light Station* grounds more attractive for the opening. A special thanks to Dale (Salty) Nault, who did a fabulous job of edging

the entire property.

Thank you to all the volunteers who devoted their time to ensure a great experience for our visitors.

1860 Light Station Hours: Open Fridays, Saturdays and Sundays 12:00 pm - 4:00 pm.

Special tours by appointment. Contact 262-284-7240, 262-268-9734, or 262-268-9150.

Amy Clark, Event/Membership Coordinator

PORT EXPLOREUM REPORT

Early May witnessed the opening of the newest exhibit at the *Port Exploreum*. Titled *Not A World Apart: How We Lived*, this latest exhibit is a look into the lives of eight different people who lived in the Port Washington area in the late 1800s and early 1900s. Through stories, artifacts and exhibits, visitors are able to learn how these eight people lived, and in some cases, survived during these times.

Curator Sarah Smith was inspired to develop this exhibit from research she completed concerning the Potter's Field in Port Washington. As Sarah examined old records pertaining to the cemetery, she found information about not only those buried here,



but also others who lived in the area and also struggled financially or mentally to make a life for themselves.

Not A World Apart: How We Lived is the result on hundreds of hours of research about not only the Potter's Field but also the Poor Houses of Ozaukee County. This exhibit helps visitors understand how strong ordinary people of this time had to be for themselves and their families to survive.

As always, the *Port Exploreum* is open every day except Tuesday from 10 am until 4 pm.

Wayne Chrusciel, Executive Director

PROGRAM IN MARITIME HERITAGE UPDATE

The *Program in Maritime Heritage* has had an active few months. Our 2017 *Port Exploreum* exhibit, *Not a World Apart*, launched in early May. The exhibit is the culmination of more than two years of research into the Ozaukee County poor houses and the potter's field at Union Cemetery.

Our spring intern, Lynne, spent most of her internship preparing for the exhibit opening. She catalogued loaned items, created object labels, and helped with fabrication. Since the exhibit opening, her time has been spent investigating an 1853 murder case, which we hope to present to the public soon. She is finishing her internship at the end of June.

We have two new interns, Grant and Kellie, who are

with us for the summer. They will spend part of their time on cataloguing and archival projects.

Grant is working to build an archive of Port Washington's news during the 1830-1890 period. Port Washington had many newspapers during this era, but very few physical copies survived. We are using online databases to find stories picked up from these Ozaukee sources and reprinted by other papers to reconstruct the local news.

Kellie will be cataloguing shipwreck artifacts in the *Society's* collections. On the weekends, both interns will guide at the *Light Station*.

Sarah Smith, PWHS Curator

FRANKLIN ST. WALKING TOUR

In 2008 the Franklin Street Walking Tour was created to give the history of many of the buildings along Franklin Street a voice. A handout was prepared with the help of Melissa Suddendorf, using the bronze numbered plaques embedded among the sidewalk pavers. This tour has now gone digital.

Businesses located near the numbered plaques along the street have a QR code in their window. Holding the camera feature of your smart phone over the code and clicking on the prompt will download the tour onto your phone. Codes can also be accessed from the City Visitor Center, City Hall, Holiday Inn Hotel, Marina, *Society Resource Center* and *Port Exploreum*.

All the buildings along Franklin Street are included with their history and additional photos.

Jackie Oleson and Geri Zehren,
Resource Center Co-Directors

Franklin Street
Historic Walking Tour
Presented By
The Port Washington Historical Society
205 N. Franklin Street
Port Washington, Wisconsin 53074
262-269-9150



Instructions

Point the camera on your cell phone towards the QR Code Above
Proceed to our website.
Begin Tour
If your camera does not pick up the code enter
WWW.ZZZAAPPD.COM
In your browser and Begin Tour
Numbered Markers are placed in the sidewalk
in front of each tour stop.
The numbers begin at 201 N. Franklin by
The Smith Brothers Coffee Shop

WELCOME EDUCATIONAL COORDINATORS

Welcome to the *PWHS* staff Deb Ryer-Jung and Neil Rismeyer, recently retired teachers, who will share the part-time position of Educational Coordinator. Deb was a long time TJ Middle School teacher, and Neil taught freshman science in Sheboygan.

Deb initially will handle the school outreach and school class visit recruiting responsibilities. She also will develop a Wisconsin history curriculum for 4th graders. She will incorporate offerings from the *Resource Center*, *1860 Light Station* and *Port Exploreum*.

Neil is clarifying where our current *Lake Michigan Learning Lab* watershed initiative meets Wisconsin science standards and will make changes to satisfy additional standards. He will also supervise class visits to the *Port Exploreum*.

Both educational coordinators will be responsible for collecting, compiling and analyzing feedback from teachers and students. Also, both will be responsible for recruiting and training additional volunteers.



Deb and Neil joined me as one of 41 exhibitors at the annual Green Schools Conference in Milwaukee on Thursday, June 14. Eleven schools expressed interest in making a class visit and requested that both the *Teacher Lesson Guide* and the *Student Science Notebook* be emailed to them.

We also were able to make positive contact with other exhibitors and presenters. Cora Lee-Palmer, Outreach Education Program Coordinator for Milwaukee Metro Sewage District, plans to bring teachers to the *Lake Michigan Learning Lab* in late July or early August. Likewise, two School Of Freshwater Sciences outreach staffers want to visit to discuss collaborative opportunities with the *Port Exploreum*.

Also Lindsey Slater, Channel 12 meteorologist and reporter, said that she would bring a camera crew to do a feature story when a school class visits the *Port Ex-*

plorium.

On Wednesday, May 30, 14 students from Trowbridge Street School in Milwaukee experienced the *Lake Michigan Learning Lab* at the *Port Exploreum* and then went to the *1860 Light Station*. The teacher, Celene Mueller, wrote the following email:

A special "Shout Out" to everyone that made the Port Exploreum field trip possible for our Trowbridge Students!!! The students were thrilled with ALL of the activities and spoke about how much fun they had the whole trip back to Milwaukee. This is a big deal, because it takes a lot for this group of kids to all agree on one trip that was their favorite! We are definitely planning on coming back next year, if we are invited.

In the next weeks, students from Japan and China are scheduled to visit the *Port Exploreum*. In October three classes from St. Marcus School in Milwaukee are scheduled. This will be the third year that St. Marcus has come to the *Port Exploreum*.

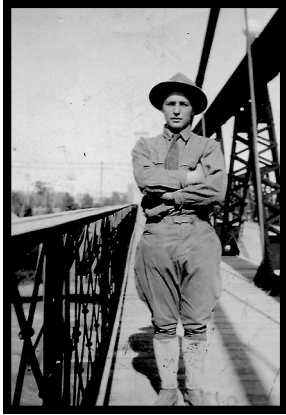
All this activity means that our educational programming needs additional volunteers to act as docents or help to develop content. It is fun and rewarding working with these young students. If you're interested, please contact me (billmoren65@gmail.com), Deb (debja13@gmail.com) or Neil (nrismeyer@gmail.com).

Bill Moren, PWHS Volunteer



THE MEN AND WOMEN OF WORLD WAR I

In 1917 thousands of men and women responded to the outbreak of hostilities that became the *Great War*, the war that only later became labeled as World War I.



Wagoner Frederick Boerner

Two hundred twenty-six men and women from the City and Town of Port Washington went off to war. We would like to share some of their stories. Frederick Boerner and Andrew Van Ells, both young men, were part of a group of Port Washington men that were wagoners with the Supply Company, 127th Infantry, 32nd Division.

Pages from Boerner's diary note that in February, 1918, his wagoner group embarked from

the United States aboard the *U.S.S. George Washington*, part of a fleet of six transports headed for the European conflict.

En route to France the soldiers experienced seasickness, a burial at sea and a near collision with another ship. On March 2, 1918, ten destroyers joined the group of ships with the cruisers returning to the States. Land was sighted on March 4, 1918, and Boerner disembarked two days later at Brest, France. Four days later his company moved on to Bordeaux where they remained for several weeks.

Boerner kept a journal of the movements of the 127th Supply Company as they moved through France, Luxembourg and into German villages, marking the progress of the war from 1918-1919. Some days the company spent a day or two in a village and other times they stayed a week or more. Boerner fought at the battles for Alsace, Aisne-Marne, Oise-Aisne, Meuse-Argonne, and he was part of the Army of Occupation in Germany.

Boerner returned home aboard the *U.S.S. George Washington* with his Supply Company group. Boerner

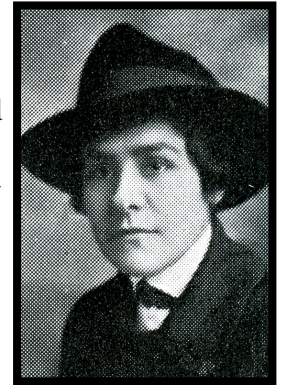
came home in 1919 to marry Adeline (Dell) Schmitz and to work in the Boerner Bros. family stores. He settled in Port Washington and oversaw the mail order sale of musical merchandise, including the records of Bessie Smith, Ethel Waters, and Ida Cox. Later he was a businessman that supplied irrigation to potato growers in central Wisconsin.

When health issues forced Boerner to retire, he took up the hobby of carving birds that he gave away to friends and family.

Andrew Van Ells fought in battles of the Alsac Sector and Aisne-Marne. He was wounded in the Fismes engagement near Chateau-Thierry and died of his wounds two days later in an evacuation hospital near the front line on August 10, 1918.

The nurse assigned to care for Van Ells was Martha Schumacher, a schoolmate from his years of school in Port Washington and a nurse who had a practice in Port Washington. Martha wrote a letter to the Van Ells family expressing her sympathy.

Following the war, the *American Legion Post 82* was named in memory of Andrew Van Ells. Martha, who had spent six months on the front line and worked every front in Belgium,



Martha Schumacher cared for Andrew Van Ells

received a citation for faithful service.

From information found in an Ozaukee Press article dated July 3, 1986, Felix Werking enlisted to see the world with a friend. He was part of Company C, 7th Engineers, 5th Division Regular Army, and worked at making stone bases for hospitals, bridges, construction dugouts and shelters. At night Werking would go out with combat troops to harass enemy troops by destroying enemy pill boxes



Felix Werking

and wire strung to protect enemy trenches.

Werking fought in the battles of Voges Mountains, St. Mihiel, and Meuse-Argonne. He was left with memories of the horrors of war: buildings where amputated arms and legs were burned, and finding hundreds of dead soldiers in Mountfaucon where they had not been able to bury them.

As a part of the Army of Occupation,

(Continued on page 7)



U.S.S. George Washington

(Continued from page 6)

Werking helped to build a large theater in Esch, Luxembourg, staying with local families. He enjoyed the friendliness and hospitality of the Luxembourg people. Werking returned home to work in the family dairy business.

George C. Steiner was a member of Company C, 9th Infantry, 2nd (Regular Army) Division. He trained as a sharpshooter and fought in the battles of Penta Mousson, St. Mihiel, Blanc Mont, and Meuse-Argonne.

Steiner was wounded by shrapnel and gassed in Blanc Mont and spent three weeks in the hospital. He was awarded the Distinguished Service Cross by General Pershing November, 1918, following a report that early in the advance of October 3 Steiner was wounded by a machine gun that rendered him unconscious for several minutes. Upon regaining consciousness, he returned to his platoon and continued to lead to the objective, remaining with the platoon waiting for the enemy's counter attack. He continued on duty for eight more hours before going to the surgeon for treatment.



George C. Steiner



Joseph Notting

Two soldiers that died in service were Joseph Bernard Notting and Raymond Learned. Notting was a member of Company F, 127th Infantry, 32nd Division. He fought in the battles of Alsace sector and Aisne-Marne and was killed in action July 31, 1918, at Cierges, Chateau-Thierry, in the Aisne-Marne offensive. He was buried at Roncheres-Aisne Military Cemetery, France.

Raymond Learned served with Canadian forces in the Scout Division, sharpshooters. He was wounded in May, 1917, and was one of the few survivors of the Canadian Battalions wiped out at Vimy Ridge. Learned was to receive the Medal for Distinguished Service in capturing an enemy machine gun and taking five prisoners single-handed. He was killed in action at Avion on September 7, 1917.

Norman Henze entered service in December 1917. He was a member of Company A, 2nd Provisional Ordinance Battery and served in France working with ammunitions. After the Armistice, Henze worked in demolition work.

When Henze returned to Port Washington, he worked for the railroad. In later years he worked at the Port Washington State Bank and at the First National Bank where he became bank president.



Norman Henze

Evelyn C. Smith, a registered nurse, began foreign assignment in Liverpool, England. Evelyn served at numerous U.S. Base Hospitals across France from La Havre, Bordeaux, to Brest, where nurses not only cared for wounds but were also responsible for feeding their patients.

Toward the end of the war Evelyn was assigned as an American Red Cross Reserve Nurse as well as a U.S. Army Reserve Nurse. After the war Evelyn served as the Sheboygan County nurse for two and a half years where she set up a children's camp for tuberculosis patients. She also worked to create Rocky Knoll Health Care Center in 1926, a facility to care for area residents diagnosed with tuberculosis.

Several years later Evelyn joined the Smith Bros. family business to promote caviar sales. Before long she was frying fish in the family fish market where she went



Evelyn C. Smith

on to develop the fish sandwich. The success of the sandwich propelled the family into the restaurant business and the creation of the Fish Shanty Restaurant.

William Joseph Schlim fought at Vesle Sector, receiving ten wounds. He was thought to have died and four days later was picked up by the Red Cross and rushed to a field hospital where he recovered.

William Theis and Edgar Zimmermann were musicians in the war. William Theis served in the navy as a member of a band conducted by Lieutenant John Phillip Sousa. He participated in war work and war fund drives. Theis was assigned to the *U.S.S. George Washington*, sailing with President Wilson and delegates to the peace conference. He crossed the Atlantic Ocean six times in service on the *U.S.S. George Washington*.

Theis was an elementary teacher and principal for 30 years. He owned and operated Theis Orchard until 1960. Lincoln Elementary School was constructed on orchard land.

Edgar Zimmermann was a musician in the 127th and 128th Infantry. He did concert work at hospitals and convalescent and classification camps in France. Zimmermann was the son of Martin Zimmermann, who founded Zimmermann's band in 1879, the first Port Washington city band.

Jackie Oleson, Resource Center Co-Director

Sources:

- FROM ARMY CAMPS TO BATTLEFIELDS, Stearns, 1919
- HISTORY OF WASHINGTON & OZAUKEE COUNTIES, 1881
- OZAUKEE PRESS, July 3, 1986
- Port Washington Historical Society Archives
- THE 32ND DIVISION IN THE WORLD WAR, 1917-1919, Wisconsin War History Commission, 1920
- WISCONSIN IN THE WORLD WAR: OZAUKEE COUNTY, R.B. Pixley, 1919

STORYBOARDS ON THE HARBORWALK



To begin the summer, we have, once more, placed four double-sided storyboards on the Harborwalk at the south entrance of Rotary Park. With the help of Eric Oleson and Rick Smith, these boards share a piece of our earlier history. It is a proud walk through our city.

Two small pamphlets, published in

1901 and 1908 by a group of business men in Port Washington, tell a picture story of a thriving, self-sustaining community, offering the businesses and services needed to provide for its residents. The business ads pasted on the boards display how these establishments contributed to their city. Not only did they promote their businesses, they displayed with pride the public park areas, churches, schools and residences throughout the city.

The storyboards use these pamphlet pictures to show where on a 1915 plat map the buildings were located. Many of the structures in the pictures are still a part of the city. One view looking north from the Grand Avenue Bridge shows the residence of John Dennett which is now the site of the Port Washington High School.

Take a walk through your community as it

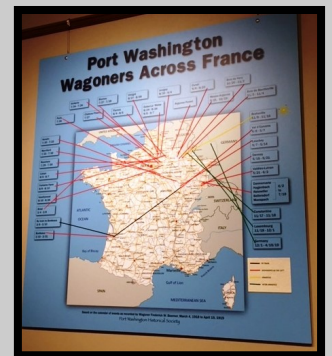


Geri Zehren, Resource Center Co-Director

WWI JOURNAL TRACES ROUTE

Frederick Boerner's journal of his visits to the villages of France, Luxembourg and Germany as a wagoner in World War 1 gives a glimpse into life as a soldier. That journey has been re-created in an online interactive map that can be accessed through a link on the *Society* website. [Click here!](#)

Jackie Oleson, Resource Center Co-Director



The journey of Port Washington Wagoners across France, Luxembourg and Germany

WWI EXHIBIT OPENING SUCCESSFUL

The opening of the WWI exhibit at the Resource Center took place on April 12. The detailed displays are fantastic. The Wagoners' map shows the amazing journey the military traveled. It is a worthwhile visit to view the artifacts and learning what the soldiers experienced.



NEW EXHIBIT OPEN AT PORT EXPLOREUM

May 10 was the opening of the *Not a World Apart* exhibit. After a couple of years of diligent research the exhibit gives a history of how our local people were able to manage their lives. The artifacts add to the realization of their living quarters and lifestyles, and the latest technology provides additional information to guests.



additional information to guests.



VOLUNTEERS WANTED:

WE NEED YOUR HELP TO CONTINUE TO TELL
THE STORY OF THE 1860 LIGHT STATION

If you or someone you know is looking to fill a few hours as a volunteer, we have a place for you. We need your help greeting visitors to our 1860 Light Station (the one on Johnson Street around the corner from St. Mary's Church) and telling them the story of what a lightkeeper did back in the 1800s. No experience necessary, just a willingness to learn a little and share the story with others.

Our 2018 touring season runs until mid-October. Shifts are from noon to 4 pm on Fridays, Saturdays and Sundays. You needn't commit to more than one day each month, and you'll be joining a great crew of volunteers.

For more information please contact Kathie Gordon at 262-284-2408 or 414-460-0045.



DONATIONS & MEMORIALS

SOCIETY DONATIONS

Bob and Bernadine Bretl

Shirli Flack

Sandra S. Guttman

Illinois Tool Works

For Kate Brown's volunteer hours

Michael J. Niederkorn

Steve Schlecht

LEGACY SOCIETY

MEMORIALS

In memory of Phillip J. Adamak

Marc and Grace Eernisse

SOCIETY IN KIND DONATIONS

Pat and Bill Moren

GIFT SHOP DONATIONS

Shirley Schanen Gruen

1860 LIGHT STATION

LIGHT STATION IN KIND DONATIONS

Dale Nault

Sign Effectz, Inc (Josh Brown)

LIGHT STATION BRICKS

RESOURCE CENTER

Roland De Wolk – research donation

RESOURCE CENTER IN KIND DONATION

LAKE MICHIGAN LEARNING LAB at the PORT EXPLOREUM

PORT EXPLOREUM IN KIND DONATIONS

BOOKS/PAPERS/PAMPHLETS/ABSTRACTS/ MAPS

Charlotte Arendt

Mary Flierl

Carol and Donald Goeden

Bruce Nason

Jean Schanen

PAINTINGS

Shirley Schanen Gruen

FURNITURE/TOYS

CD/DVD/VIDEO/RECORDS/TAPES

BUSINESS ARTIFACTS

Charlotte Arendt

Jean Schanen

PHOTOS AND NEWSPAPER CLIPPINGS/PRINTS/ POSTERS/POSTCARDS

Charlotte Arendt

Carol and Donald Goeden

Wayne Hoffmann

Jean Schanen

RECOVERIES FROM SHIPWRECKS

ANTIQUE METAL & WOOD/GLASS/FABRIC

Charlotte Arendt

Mary Flierl

Bob Fuller

Wayne Hoffmann

Jean Schanen

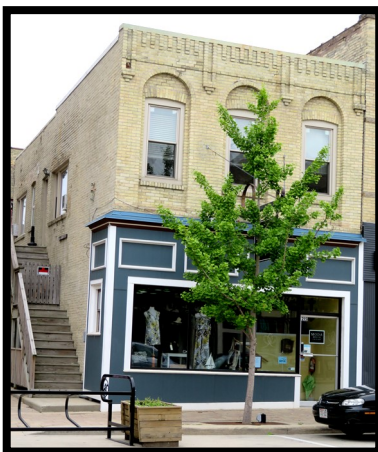


VISITOR LOOKING FOR THE SCHAUS BUILDING

The *Research Center* was recently visited by a gentleman whose great-great-grandfather, Peter Schaus, built the store at 215 Franklin Street that many of the local community may recall as Schils Bakery. It presently is the home of Moda Bella, a small boutique. According to his grandson, Peter Schaus was a tailor in this city. Union Cemetery contains a plot for the Schaus family.

Timothy Heggland, in the Port Washington Intensive Survey, found that the Peter Schaus Building was built in 1854 as a commercial building.

Mary Flierl,
Research Center Volunteer



NIGHT AT THE LIGHT

Mark your calendar for July 28!

You will not want to miss this year's *Night at the Light: A Lake Michigan Luau! The Bluegrass* duo, *Frog Water*, will be providing the entertainment. Pitch's will cater a tasty meal and beverages include beer, wine and soda.

Contact Amy or Kathie at the *Port Exploreum* to reserve your spot: 262-284-2406.



Port Washington Historical Society

Legacy Society

Confidential Membership Form

The PWHS **Legacy Society** has been established as a way to honor and recognize those who have made a planned gift to the Port Washington Historical Society as a beneficiary in their will or trust, retirement account, charitable gift annuity or charitable trust, or life insurance policy.

Please fill out this form and return it to the *PWHS* office to confirm your membership. The information you provide will be held in strictest confidence.

HOW WOULD YOU LIKE TO BE RECOGNIZED IN THE LEGACY SOCIETY:

NAME (S): _____

ADDRESS: _____

PHONE/EMAIL: _____

☐ I/WE WISH TO REMAIN ANONYMOUS

HOW HAVE YOU INCLUDED THE PORT WASHINGTON HISTORICAL SOCIETY IN YOUR PLANS:

☐ BEQUEST IN MY/OUR WILL

☐ CHARITABLE REMAINDER TRUST (CRT) OR CHARITABLE GIFT ANNUITY (CGA)

☐ IRA BENEFICIARY

☐ LIFE INSURANCE BENEFICIARY

☐ REAL ESTATE

☐ STOCK

☐ OTHER _____

ADDITIONAL INFORMATION PWHS SHOULD KNOW:

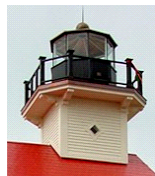
The current value of the gift is approximately (optional) \$ _____

Signature: _____ Date: _____

Spouse's Signature (If joint will): _____ Date: _____

Please return to:

PWHS Legacy Society P.O. Box 491 Port Washington, WI 53074



Port Washington Historical Society

P. O. Box 491
Port Washington, WI 53074-0491
www.portwashingtonhistoricalsociety.org

Upcoming Events

QUARTERLY MEETING Wednesday, July 18, 7 pm

*Port Washington State Bank's Lakeview Room
Wilson House, 100 East Main Street. Port Washington*

For a complete list of PWHs
events, click here to visit:
[www.facebook.com/
PortWashingtonHistoricalSociety](http://www.facebook.com/PortWashingtonHistoricalSociety)
or
www.portexploreum.com/calendar/

Click

Fireworks on the Deck

Wednesday, July 4, *Port Exploreum*

Sunrise Wedding Reception

Friday, July 13, *Port Exploreum*

Classic Movie Night

Friday, July 13, *Port Exploreum*

Concordia Japanese School Group

Sunday, July 15, *Port Exploreum*

Bridal Shower

Sunday, July 22, *Port Exploreum*

Night at the Light

Saturday, July 28, *1860 Light Station*

Classic Movie Night

Friday, August 10, *Port Exploreum*

Classic Movie Night

Friday, September 14, *Port Exploreum*

Annual Meeting

Wednesday, October 17, TBA

PWHs Gala

Friday, November 3,
The Family Farm Event Loft