



Resource Center

Historical Perspectives

Port Washington



Port Exploreum

Historical Society



1860 Lighthouse

VOLUME 28, ISSUE 4

FALL 2017

PLANK, WHEEL AND RAIL: TRANSPORTATION IN EARLY WISCONSIN

The Annual Meeting will take place in Port Washington State Bank's Lakeview Room in the Wilson House on Wednesday, October 18, 2017, at 7:00 pm. There will be a short business meeting including the election of the board of directors followed by a program entitled *Plank, Wheel, and Rail: Transportation in Early Wisconsin*.

Jim Willaert, Curator of Interpretation and Collections at Wade House Historic Site in Greenbush, Wisconsin, will tell how technological advancements brought significant changes to the way we lived, worked and traveled in the late nineteenth century. Transportation in Ozaukee, Sheboygan and Fond du Lac Counties were hubs of activity competing to bring farm goods and resources from the interior to the ports along the state's east coast. He will show how plank roads and railroads helped bring this to fruition.

The Wade House is one of 12 historic sites and museums operated by the *Wisconsin Historical Society*. Willaert has worked in the history field for more than 25

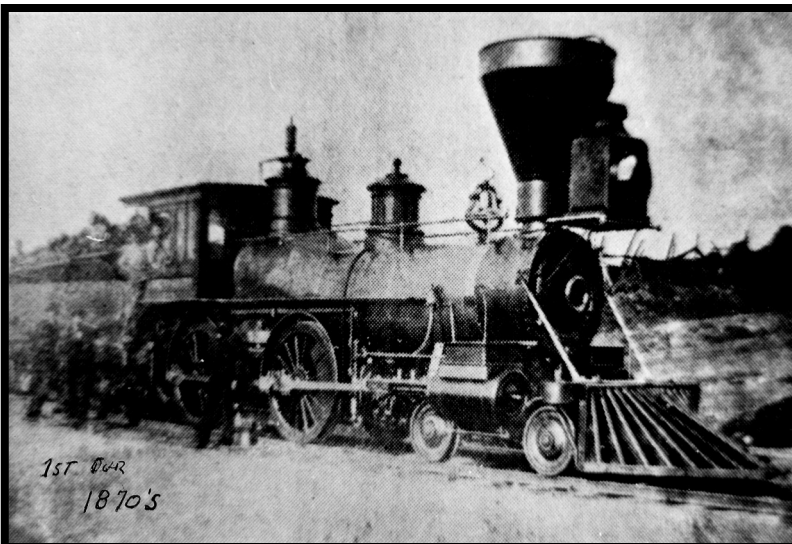
years. Prior to the Wade House, he worked at Conner Prairie Interactive History Park in Indiana. He holds a Masters Degree in History from Eastern Illinois University.

Mary Flierl, Program Coordinator

Newsletter's now more computer friendly—click on hyperlinks throughout!

Inside this issue:

<u><i>President's Message</i></u>	2
<u><i>Executive Director Update</i></u>	3
<u><i>1860 Light Station News</i></u>	3
<u><i>Reuben Gold Thwaites Trophy Awarded</i></u>	4
<u><i>PWHS Resource Center Exhibits</i></u>	4
<u><i>Program in Archaeology & Maritime Heritage</i></u>	5
<u><i>Newport Shores Area Development</i></u>	5
<u><i>2017 Board of Directors Elected</i></u>	6
<u><i>Timeline of a Civil War Soldier</i></u>	7
<u><i>Soldier, Family Man, Businessman</i></u>	8
<u><i>2017 Annual Dinner / Gala Recap</i></u>	9
<u><i>Donations and Memorials</i></u>	10
<u><i>PWHS Legacy Society Membership Form</i></u>	11



1870's steam engine

Board of Directors

Jeff Morgan, President
 Bill Schanen III, Vice Pres.
 Angela Sikowski, Treasurer
 Kay Goodwin, Secretary
 Brian Barber
 Missy Hockerman
 Kurt Blum
 Allon H. Bostwick
 Mike Didier
 Robert Henkle, Jr.
 Bill Moren
 Jackie Oleson
 James J. Pauly
 Lee Schlenvogt
 Daniel Solorzano

PWHS Exec. Director

Wayne Chrusciel

Resource Center Dir.

Jackie Oleson and Geri Zehren

Light Station Museum

Rick Smith, Director
 Kathie Gordon and
 Linda Nenn, Assist. Directors

Volunteer and Marketing Coordinator

Kathie Gordon

Newsletter

Ann Flierl
 Michele Weiland

Quarterly Programs

Mary Flierl

Membership and Special Events

Amy Clark

Contact information

portwashhistsoc@att.net
 P. O. Box 491
 205 N. Franklin Street
 Port Washington, WI 53074
 RC: 262-268-9150
 LS: 262-284-7240
 Exploreum: 262-284-2406

Websites

portwashingtonhistoricalsociety.org
portexploreum.com

Historical Perspectives

is published four times a year

President's Message

Dear Members,

The year 2017 has been another exciting one for the *Port Washington Historical Society*. In June we were notified that the *Society* had been selected for the *Reuben Gold Thwaites Award for Outstanding Local History*.

The *Light Station* is finishing up another busy season of giving tours to hundreds of visitors and students from area schools. The *Exploreum* continues to be busy with visitors and as a popular venue for meetings and events. The *Lake Michigan Shipwrecks* exhibit has been extremely well received. The *Resource Center* continues to hum with volunteers curating and accessioning the artifacts that continue to be collected by the *Society* as well as running the business operations of the *Society*.

We continue working to develop educational programs to be used in area schools in conjunction with class visits to the *Exploreum*, *Light Station* and *Resource Center*.

We have had live broadcasts from the *Port Exploreum* and the *Light Station* by several Milwaukee television stations highlighting what great properties they are to visit. This coverage is a wonderful way to spread the word about what the *Society* and Port Washington has to offer.

The *Night at the Light* was held on July 29 and was a wonderful evening of food, beverages, live music and tours of the *Light Station*. We were blessed with another picture-perfect evening of weather for the event.

On September 30 we held the annual fundraising gala *Denim and Diamonds... Bluegrass and BBQ*. It was a wonderful evening and a tremendous success! A record number of members and guests attended, and we raised a record amount of funds for the support of the *Society*! I would like to give a special thanks to Kathie Gordon and Amy Clark, co-chairs of the Gala, for an outstanding event. A highlight of the evening was the presentation of the *Reuben Gold Thwaites Award* by Dr. Ellsworth Brown of the *Wisconsin Historical Society*. The impressive trophy will be displayed at the *Resource Center* and *Exploreum*. Much like the Stanley Cup, it is a travelling trophy. It has our name engraved on it, and we will be able to proudly display it for a year until the next winner is chosen.

I would like to thank two board members who will be stepping off the board this year. Lee Schlenvogt, who served two terms, will be leaving the board after six years. Brian Barber served for three years and has chosen not to stand for re-election but will remain involved as a talented volunteer, especially in the technology realm. Thank you both for your service!

Our need for volunteers continues. All three properties need volunteers in various capacities. The *Light Station* is closed through the winter, but it is not too early to sign up as guide for next season. Volunteering will help the *Society* fulfill its mission, give you an opportunity to get to know fellow members and meet visitors to our city. You don't have to be a *Society* member to volunteer, so encourage family, friends and neighbors to help. Volunteer today!

Our annual meeting will be held on October 18. The program will be a presentation by Jim Willaert from the Wade House entitled *Plank, Wheel and Rail: Transportation in Early Wisconsin*. Board of Director elections will be held at the meeting as well, so please plan to join us for this important evening.

Jeff Morgan, President

Port Washington Historical Society Board of Directors



Click

EXECUTIVE DIRECTOR UPDATE

The beginning of fall finds the *Historical Society* busy on many fronts. We have several projects that are on-going, and most importantly, we are moving forward with development of the *Historical Society's* three-year strategic plan. New vision and mission statements have been approved by the Board of Directors, and now specific tactics and strategies are being developed. Watch future newsletters for more information and the role you can play in helping the *Historical Society* fulfill its vision and mission.

Other projects and initiatives that are in process are:

Lake Michigan Learning Lab – We hosted 35 students from Grandview High School of Milwaukee as part of our *Lake Michigan Learning Lab*. This was the first paid school visit, and the first from a school not associated with the Port Washington/Saukville School District. Allon Bostwick, Bill and Pat Moren, Amy Clark and myself led the students with experiments, videos and technology as they learned about the watershed and the impact on Lake Michigan and Port Washington.

Technology – Work is on-going with Balance Studios (our software people for the museum) concerning the development of a platform for a new and improved walking tour. As part of the *Maritime Heritage* program, Sarah Smith and one of the interns have been developing content for various buildings and parts of Port Washington, and we are looking to present it to the public in new and exciting ways. It is our intention to work with the Port Washington Tourism Council to assist in the funding and development of this app.

Publicity – During the past couple of months we were

fortunate to have Fox 6 Morning News visit our facilities twice. The first was on the weekend of July 4 when they visited both the *Light Station* and the *Port Exploreum*, and then they came back in August and reported from the *Port Exploreum* during the 9 am Fox Morning show. Amy Clark, Kathie Gordon and Rick Smith did a great job creating enthusiasm for the *Light Station*, the museum as well as the entire *Historical Society*. Several people mentioned that they came to see the museum after seeing the Morning show.

The *Port Exploreum* was also featured in the 2017 issue of *Wisconsin Great Lakes Chronicle* in which our *Lake Michigan Learning Lab* was explained. Bill Moren, Board Member, and David Libert, who assisted in the development of the program, explained in detail how the program was developed, what is involved, and how students learn and engage with the Port Exploreum to have a better understanding of our the Lake Michigan Watershed.

Improvements – Several projects were completed over the summer which members and visitors alike will notice on their next visit to the *Port Exploreum*, the *Resource Center* and the *Light Station*. New signage was installed at both the *Light Station* and at the *Resource Center*, and a new extension to the *Port Exploreum* museum store was added (it will also serve as a bar and will be rented out for events). The siding on the north side of the *Generator Building* at the *Light Station* was replaced, and now both that building as well as the entire *Light Station* will receive a fresh coat of paint.

(Continued on page 6)

1860 LIGHT STATION NEWS

The 2017 touring season at the *1860 Light Station* is almost over. We close on Sunday, October 15, except for a late tour with St. Marcus School students. Many thanks to all of our volunteer guides and greeters and to the interns who helped this season. We will be holding an end-of-year staff meeting and get-together to discuss future operations and next year's plans and ways to improve staffing and operations. The meeting will also include a short end-of-season party, sponsored by the Directors.

Painting contractors are in the process of painting the lighthouse and generator building. We will soon be replacing the generator building garage doors and installing an electric opener for the tenant. We will also be replacing the two hot water heaters that have been in the

building since the renovation and are starting to show rusting and possible failure. Winterization of the lighthouse will begin shortly after season closing, with cleaning from rafters to basement floor.

Once cleaning and winterizing are complete, we will begin preparations for the 2018 season. Our emphasis next year will be on the women who kept the light. Hopefully, by 2018 we will have clear title to the 1860 Light Station property and will be able to commence with the archeological workshop that had been planned for this past summer. With Sarah Smith's move to Vancouver, Canada, this workshop was put on hold.
Richard D. Smith, Director
Kathie Gordon, Assistant Director
1860 Light Station

REUBEN GOLD THWAITES TROPHY PRESENTED TO THE PWHS

A highlight of the Gala on September 30 was the presentation of the Reuben Gold Thwaites trophy by Wisconsin Historical Society Director Dr. Ellsworth Brown. The award, presented annually to one affiliated historical society for continued excellence for its overall services to the community over a period of at least five years, is held by the winning society for one year.

Criteria states that a society must demonstrate achievements in both collecting and preserving history and sharing history with the public. *Port Washington Historical Society* has shown excellence and achievement through its restorations of the *1860 Lighthouse and Light Station Museum*, the 1852 Blake building that is the *Society Resource Center* and the Henry and Hill building that functions as the *Port Exploreum*. These buildings were not only restored but repurposed for new functions.

Artifacts, archives, photographs, oral histories, and visual images have been collected and preserved. Col-

lections are focused on local history covering businesses, maritime history and the stories of the people of the community over its 175 year history.

Community history is shared through quarterly meetings, exhibits at all three buildings, and historical markers erected on city buildings and throughout the downtown. These markers recognize historical events, historic buildings and individuals that contributed to the city's history. Educational initiatives are an important aspect of sharing Port Washington history, whether through tours, programming or collaborations with Port Washington/Saukville School District, the School of Freshwater Sciences, NOAA, Discovery World, Wisconsin Sea Grant, the University of Wisconsin-Milwaukee, Riveredge Nature Center and the Ozaukee Washington Land Trust.

The trophy will be on display through 2017 and into the spring of 2018.

Jackie Oleson, PWHS Resource Center Co-Director



The Reuben Gold Thwaites Trophy was presented to the Port Washington Historical Society at the society GALA held Saturday September 30

PWHS RESOURCE CENTER EXHIBITS

Items are sought for exhibit in 2018. The Resource Center's changing exhibits for 2018 will focus on World War I. Items can be donated or loaned to the *Society* for the duration of the exhibit. Items can include photographs, uniforms, letters, war souvenirs, or related materials.

Items are also sought for a Port Washington High School exhibit that will be created as part of the new

building. This exhibit will change from time to time and can include items like yearbooks, letter jackets, photos, posters, souvenirs, class activity items or high school related items. These items can be donated or put on loan to the *Society* and high school.

Please contact Jackie Oleson or Mary Flierl at 262-268-9150.

Jackie Oleson, PWHS Resource Center Co-Director

VETERANS DAY IS NOV. 7

Two local soldiers are being highlighted in this newsletter; a Civil War Soldier and one from WWI.

Port Washington Historical Society's Mission Statement:

To create opportunities for inspirational discovery through preservation, education and exploration of the Port Washington area's history and its maritime environment with sustainable programs that honor the past while looking to the future.

PWHS PROGRAM IN ARCHAEOLOGY AND MARITIME HERITAGE

The *PWHS Program in Archaeology and Maritime Heritage* said goodbye to two of our three summer interns in August. Patrick Hall and Kendra Lawrence are both continuing their graduate education, and we are grateful for the hard work and dedication they showed over the duration of their internships. Both made substantial progress on our on-going projects. Beth Merrick Scheel will continue interning with the *PWHS* and will assist with the development of the next exhibit at the *Port Exploreum*. We will welcome two new interns in January of 2018.

Much of our time this fall will be devoted to planning, curating and creating the *Port Exploreum*'s next exhibit. *Without Means for Life or Death* examines the lives of Ozaukee County's poorhouse residents and other Port Washington citizens who were buried in the

Union Cemetery potter's field. The exhibit is the result of a multi-year research project into poverty in Ozaukee County in the 19th and early 20th centuries. Sigrid Degner (former *PWHS* intern, M.A. Public History) and Beth Merrick Scheel (current *PWHS* intern, MLIS Archives) are working as assistant curators on the project. *To the Waters*, our biennial shipwreck series, will return in 2019.

The *PWHS* is interested in adding archaeological artifacts (both prehistoric and historic) and artifacts from Great Lakes shipwrecks to our permanent collections. Anyone who has items that they wish to transfer to the *Society's* holdings is encouraged to email PWHSMaritimeCurator@gmail.com.

Sara Smith

Archaeology and Maritime Heritage Program

NEWPORT SHORES AREA DEVELOPMENT

You may have noticed in the news lately that there are development plans for the lakefront. This article notes some background history of the area.

In the early 1900s, the Lakeview Tavern was just a bar and bait shop for fisherman located behind the Lake Street Gilson house facing Jackson Street. Mary Gilson married Charles Penkwitz, a fisherman better known as "Honey."

In the 1950s Honey Penkwitz owned and operated the Lakeview Tavern at 407 E. Jackson Street near the north breakwater at the harbor. It was a small tavern frequented by the local fisherman and a few visitors to Port Washington. It was advertised as "the spot to spend the end of a perfect day of fishing."

Honey's daughter Betty married Eldor Hoff. Many remember Eldor as "Butch" Hoff. Betty and Butch made some notable changes to the tavern when they became owners in 1961. They doubled the space with an addition that included a new 100 ft. bar. The new addi-



tion had large windows that provided improved views of Lake Michigan and the busy harbor. Tables along the windows and inside what was the old building provided increased seating for dining.

The exterior of the building was tastefully designed with lannon stone and wood panels. A parking lot was located just east of the building for the convenience of patrons. The new facelift also came with a new name. The grand opening of the Lakeview Lounge was Saturday, December 16, 1961.



John Weinrich made the last name change to the Lakeview Tavern when he purchased the establishment in 1989. The new name became Newport Shores. John had a background working in restaurants such as the River-view Inn in Saukville and the Port Hotel. John added a patio area that is enhanced with a salvaged Great Lakes tugboat.

As with the Hoffs, Newport Shores is a family business with help from John's wife Angela, daughter Keri and sister Mindy.

Mary Flierl, Resource Center Volunteer

2017 BOARD OF DIRECTORS ELECTIONS

The Nomination Committee is pleased to present the slate of candidates for election to the *Port Washington Historical Society* Board of Directors to be elected at the annual meeting on Wednesday, October 18, 2017.

Current board members whose terms are expiring this year are Lee Schlenvogt, Brian Barber, Missy Hockerman, Mike Didier and Dan Solozano. Lee Schlenvogt has served three consecutive terms and due to the by-law change is not eligible to seek re-nomination. Brian Barber has declined due to work and family commitments. Missy Hockerman, Mike Didier and Dan Solozano have all indicated that they will seek another term on the board.

In addition to the three current board members seeking another term, the Nominating Committee is pleased to present to the membership two additional individuals who have expressed an interest in preserving the history and heritage of the Port Washington area as candidates for the Board of Directors.

Jack Rooney has a Bachelor of Arts degree in Journalism from the University of Wisconsin, Madison. He currently is the Chairman and CEO of Ogilvy & Mather

in Chicago. Jack is a Port Washington native and a 1976 Port High graduate. He has spent the last 37 years working in the advertising business. Jack is married and the father of four grown children and resides in Mequon. He has a lifelong interest in history, specifically architectural history and preservation and is a member of many professional organizations and service clubs. Jack hopes to use his experience and skills to contribute to the society in all ways that he is able.

Mark Koenig has a Bachelor of Science degree in Metallurgical Engineering from the University of Wisconsin, Madison. He is the owner of EXO Steel which manufactures steelmaking equipment. Mark is married and has two children and one grandchild. He was born and grew up in Port Washington and currently lives in Cedarburg. He is a lifetime member of the *Port Washington Historical Society* and places a high value on preserving and passing our history to future generations. Mark looks forward to working to continue building on the preservation and sharing of Port's rich nautical, manufacturing, athletic and civic history.

Jean Schanen, Nomination Committee Chair

MYSTERY PHOTO



Can you help determine where the A & P store was in Port Washington in the mid to late 1930s? The *Resource Center* recently received a photo of Leslie Babcock in what appears to be an A & P store in Port Washington. Assistance is sought in determining the location of the store.

WELCOME NEW MEMBERS!

*Richard & Sylvia Ansay
David Haggarty
Thomas & Nancy Holley
Jon Neitzke - Beanies
Restaurant*

(Continued from page 3)

Finally, a reminder that the *Light Station* closes for the season on October 15, and the exhibits at both the *Resource Center* as well as the *Port Exploreum* will be changing after the first of the year. If you have not been to any of these properties, I suggest you schedule a visit soon!

Wayne Chrusiel, Executive Director

TIMELINE OF A CIVIL WAR SOLDIER: EDWARD REED BLAKE (1844-1923)

Three months following the secession of seven states from the United States of America, the Confederate States of America was created in February 1861. Within two months, on April 12-13, the Confederate Army bombarded and captured Fort Sumter near Charleston, South Carolina, signaling the start of the American Civil War.



On April 15, President Abraham Lincoln issued a call for a 75,000-man volunteer militia to serve for three months. Within a month, a second call for an additional 42,000 troops was issued. One of the many courageous and patriotic Wisconsin men that answered that call was seventeen-year-old Edward Reed Blake of Port Washington.

Edward was the son of Barnum and Harriet Gilmore Blake. Upon moving from Franklin, Massachusetts to Port Washington in 1848, Barnum became a successful lumber baron and local businessman.

When Edward announced his intention to enlist, his father objected, but his son did not waiver. Barnum offered Edward \$10,000 to remain with the family business as opposed to enlisting. Edward responded, "Father, you cannot bribe me to desert my country." He subsequently joined the 24th Wisconsin Volunteer Infantry, a regiment of the Army of the Cumberland, a principal Union army in the Western Theater. His request to be the Flag Bearer for the 24th regiment was granted.

In the succeeding three years, the 24th engaged in the battles of Stone's River, Chickamauga, Franklin, Nashville, Missionary Ridge and Chattanooga. At the Battle of Franklin, Edward Blake planted the flag atop the

breastworks, a protective shoulder-high mound of dirt, as the regiment came under heavy fire. The flag staff was shattered by the lead munitions. Fearing capture of the flag, Edward retrieved the tattered flag, wrapped it around his torso, concealed it with his coat, grabbed his musket and joined the battle. As a result of his actions, Edward R. Blake was promoted to 2nd Lieutenant and later retired as 1st Lieutenant.

Upon returning to Port Washington, Edward assumed the leadership in the family business when his father Barnum moved to California. His mother and older sister Louisa E. (married to John M. Bostwick) remained citizens of Port Washington. Edward married Adele Wright, a graduate of Yale, who died of pneumonia at age 27. Amalia Landolt became his second wife in a marriage that produced three children: Adele Blake, Emmons Blake (Red Arrow Division, WWI) and Julia Blake Muenster.



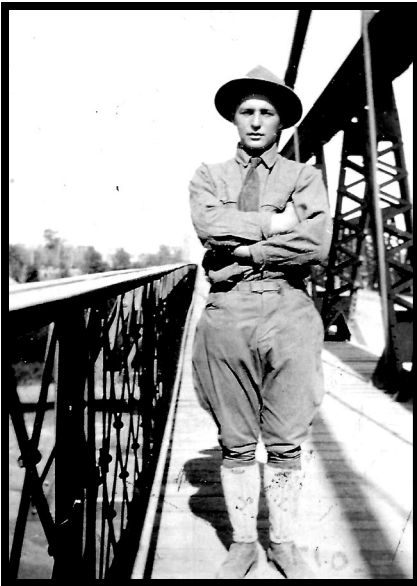
Edward R. Blake served in the Wisconsin State Assembly from 1873-1874 and the Wisconsin Senate from 1882-1886. He later moved to Chicago where he died in 1923. A modest burial site in the Union Cemetery in Port Washington commemorates his service to his country and his community.

The original tattered flag he patriotically protected and secured is archived at the Wisconsin Veterans Museum in Madison, Wisconsin.

Allon Bostwick, PWHS Board Member

SOLDIER, FAMILY MAN, BUSINESSMAN

Donations coming into the *Historical Society Resource Center* bring with them their stories. Several recent donations focused on the Boerner family, memorable for the large three-storied building bearing the family name and which anchored the downtown business district throughout the 1900s and into the present day. One of the collections received is that of Frederick W. Boerner, descendent of the original founders of Boerner Bros. Items donated tell the story of a young man who served in World War I and was a part of the commercial life of Port Washington when he returned.



Frederick W. Boerner as a young Port Washington lad who served in WWI

Beginning in 1849 when Christoph Friederich Boerner settled in Cedarburg and helped to found the City of Cedarburg, the name Boerner has been a part of the ongoing history of not only Cedarburg but also Port Washington. Through five decades Christoph married twice and fathered thirteen children, of which six boys and two girls survived. Christoph died at the age of 78 in 1890, having established Boerner Bros.

Surviving sons were Arthur R., Gustave A., Henry C., Theodore A., Oscar F. and Albert F., several of whom managed the stores established in Cedarburg, Saukville, Port Washington (of which there were two), and West Bend.

Henry C. Boerner married Helen Barr and had four children, the fourth being Frederick W. Boerner born in 1898. As a young student of 18, Frederick entered the US Army ranks on May 28, 1917. Frederick served in World War I as a wagoner in the 127th Infantry Army Expeditionary Force, moving through France, Luxembourg and Germany and participating in numerous engagements. Pages from his diary note his departure from the U.S. on the S.S. George Washington in February of 1918, part of a fleet of six transports headed for the European conflict. Troops from Wisconsin and Michigan formed the 32nd Division in France. Enroute to France there was seasickness, a burial at sea and a near collision with another ship. On March 2, 1918, ten

destroyers joined the group of ships with the cruisers returning to the States.

Land was sighted on March 4, and Frederick disembarked two days later. Frederick went on to keep a calendar of the French, Luxembourg and Germany villages through which his company moved, revealing progress of the war from 1918-1919. Some names are familiar like Brest and Bordeaux, and others like Hagenbach and Venhenie may be less recognizable. Sometimes the troops spent a day or two in the area and other times it was a week or more.

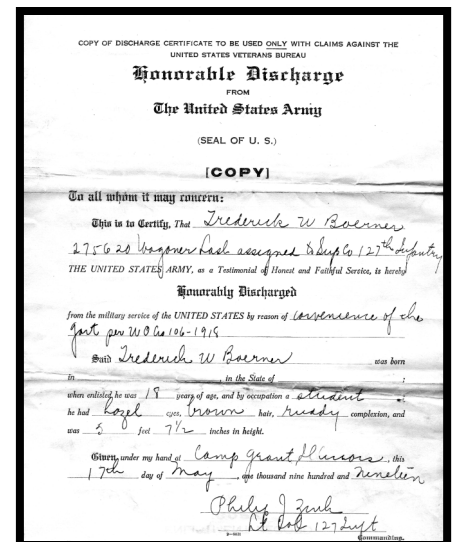
Included in the donation besides diary pages and a calendar of troop movements are photographs of Frederick in his army uniform, Supply Company 127th Army Expeditionary Force and the 64th Brigade Red Arrow Wisconsin 127th Infantry. Information on the Thirty Second Division focuses on posters and reunions of the division.

Items Frederick brought back from overseas include a meal ticket, directions for the use of a gas mask, his army stripes, Battalion patches and bullets. Frederick also brought home German souvenirs of coins, uniform patches, buttons and belt buckle.

Frederick came home in 1919 to marry Adeline (Dell) Schmitz, raise a family, and to work in the Boerner Bros. family stores. Frederick settled in Port Washington and oversaw the mail order sale of musical merchandise, including the records of Bessie Smith, Ethel Waters and Ida Cox.

We know that Frederick and Dell traveled a lot, including a trip to Cuba during the winter of 1928-1929. They brought back several tourist newspapers and guides from Havana.

Frederick W. Boerner lived a hundred years ago. His story is a lot like that of a grandfather we might have had, living at the beginning of the twentieth century, serving in the army through World War I, and



Frederick W. Boerner was honorably discharged from the US Army on May 17, 1919, after serving two years as a wagoner in the 127th Infantry

(Continued on page 9)

DEMIN & DIAMONDS... BLUEGRASS & BARBEQUE GALA

The 2017 *Port Washington Historical Society* Gala Fundraiser was held Saturday night, September 30, at the Family Farm in Grafton, and by all measures was a huge success. 135 people attended the Gala, with 60 silent auction items and 12 voice items offered for bidding. The end result is that while final numbers are not yet available, the Gala Committee is very confident that we met our goal of raising over \$65,000. Special thanks to the members of the Gala Committee, included Amy Clark, Kathie Gordon, Ann Flierl, Mary Flierl and Grace Eernisse. Watch for final results in a future newsletter.

Kathie Uttech Gordon

Co-Chair, 2017 Annual Dinner/Gala



Jeff & Rose Morgan with Shirli Flack



Jackie Oleson & Wayne Chrusiel accept award from Dr. Ellsworth Brown



Band Frog Water



(Continued from page 8)

coming home to find work and start a family. Frederick rejoined his family and took his place in the family business.

Recently, several donations that relate to the Civil War, World War I and World War II were made. These donations help expand our collections and will contribute to future exhibits. The *Resource Center* encourages

anyone who has memorabilia, uniforms, photos or anything that relates to past military actions to donate or loan them to the *Society* or to allow the Resource Center to copy any archival material.

A World War I exhibit is planned for 2018. Donations or loans of items that relate to World War I are being sought. Please contact Jackie at 262-268-9150.

Jackie Oleson, PWHS Resource Center Co-Director



DONATIONS & MEMORIALS



SOCIETY DONATIONS

Andy Hebein
Bill and Pat Moren
Michael J. Niederkorn
Lincoln Oro
Diane M. Pike

MEMORIALS

In memory of James Horstman
Mary Fran Lepeska
In memory of Paul Jushka
Don and Jean Popp
In memory of Wally Krier
Daniel Decker
William and Mary Henkle
Richard Lanser
Patti and Craig Nettesheim
Katherine Preisler
Jack Rooney
Lucille Weidner
In Honor of Eric & Jackie
Oleson's 50th Wedding Anniv.
Katherine Allen
Wayne and Ann Chrusciel
Todd and Kathie Gordon
Tom and Lynda Grasse
Keith & Carrie Ann Hiestand
Diane and Jerold Kiesow
Geri Zehren

GALA 2017

PRESENTING SPONSOR

Ansay & Associates, LLC

DINNER SPONSOR

Shirli Flack

BEVERAGE SPONSOR

Port Washington State Bank

AUCTION SPONSOR

Anchor Enterprises

DIAMOND SPONSOR

Samuel DeMerit
Allied Insulation
Jeff and Rose Morgan
Bill and Jean Schanen

GOLD SPONSOR

Marc & Grace Eernisse
Legacy Private Trust Co.
Port Wash-Saukville Rotary

SILVER SPONSOR

Kathie and Todd Gordon
Linda Nenn
O'Neil, Cannon, Hollman,
DeJong & Laing S.C.

BRONZE SPONSOR

Eernisse Funeral Homes
Elegant Estates
Kwik Trip
Bill and Pat Moren
TCF National Bank
Umansky Motor Cars

REVERSE AUCTION MATCH

Shirli Flack

REVERSE AUCTION

Ansay Development Corp.
Jean Ansay
Mike Ansay
Nancy and Joseph Arcara
Kay Baumann

George and Mary Jo Bichler
Kathy Bink
Allon Bostwick
Art Buser
Wayne and Ann Chrusciel
Sam DeMerit
Ann Flierl
Mary Flierl
Don and Barbara Gilmore
Kay Goodwin
Todd and Kathie Gordon
Ruth and Bob Henkle
Thomas and Nancy Holley
Mark Koenig
Ken and Pat Kozak
Mary Fran Lepeska and
Patrick Tearney
Jane Matheny
Richard and Karen
Mollenhauer
Bill and Pat Moren
Jeff and Rose Morgan
Dan and Stephanie Newsted
Jackie and Eric Oleson
James and Mary Jo Pauly
Bill and Jean Schanen
Mary Kay Schuknecht
Todd and Angela Sikowski
Daniel and Mary Solorzano
David and Michelle Stricker
Rick and Jacki Walters
Geri Zehren
Marie Zirbes

DONATIONS

Susanne Ahner
Ardyce Ahsmann
Nancy and Joseph Arcara
Kurt and Kelly Blum
Robert Brooks
Herbert H. Johl
Adrian and Judith Mullin
Marlene Richart
Daniel H. Smith
John and Gina Taucher
Sue E. Thobaben
Mark Wildhagen

AUCTION ITEM

DONATIONS

Allen Edmonds
Allure Salon
American Players Theatre
Anchor Men's Wear
Ansay and Associates
Balance Studios
Baltica Tea Room and
Gift Shop
Bartolotta Restaurants
Bayside Garden Center
Beanies Mexican Restaurant
Bruce and Mary Becker
Bernie's Fine Meats
Jim Biever
Bloomin Olive, LLC
Blue Harbor Resort
Kurt Blum
The Bog
Bookworm Gardens

Bravo Antiques
Chudnow Museum of
Yesteryear
CoCaLeNa
Costco
Cousin's Subs
Jodi Dickman
Door County Trolley
Drews True Value Hardware
Marc and Grace Eernisse
Embrace Your Face
Shirli Flack
Ann Flierl
Mary Flierl
Gene Fransee & Son Nursery
Don and Barbara Gilmore
Todd and Kathie Gordon
Green Bay Packers Corp.
Shirley Schanen Gruen
Harbor City Plumbing
Harley Davidson
The Iron Horse Hotel
Larry's Brown Deer Market
Leslie Kagan
Kesslers Diamonds
Kettle Moraine YMCA
John Michael Kohler
Arts Center
Janice Leone
Lynden Sculpture Gardens
Marquette University
Meijer
Messina Italian Restaurant
Milwaukee Art Museum
Milwaukee Bucks
Milwaukee Public Museum
Milwaukee Repertory Theatre
Museum of Wisconsin Art
Office Copying Equipment
Eric and Jackie Oleson
Ozaukee Co. Parks & Rec.
Ozaukee Dairy Promotion
P & R Auto Detailing
Palermos Pizza
Parm's Landscape and
Management
Pear & Simple
Peninsula Players
Port Publications
Potawatomi Hotel & Casino
Riveredge Nature Center
Sanfilippo's Sentry
Fred and Kathie Schaefer
Lee and Pamela Schlenvogt
Schmit Bros.Dodge
Jordan Schwanz
Sharbunos
Skylight Music Theatre
Suburban Harley-Davidson
Ten Chimneys
Janet Trzecinski
Umansky Motors
Dr. Michael & Karen Weber
Bob and Holly Wilke
X-Cell Corporation
Zing Boutique

SOCIETY IN KIND DONATIONS

Jodi Dickman
Geri Zehren

1860 LIGHT STATION

Shirli Flack
Alice Horton
Russell Johnson
Daniel H. Smith

NIGHT AT THE LIGHT

John and Vici Dohrwardt
Jeff and Rosalie Morgan

LIGHT STATION IN KIND

DONATIONS

Ken Grigas
Alice Horton

LIGHT STATION BRICKS

RESOURCE CENTER

RESOURCE CENTER IN KIND

DONATION

PORT EXPLOREUM

Ansay & Associates, LLC
Janet Nealy

PORT EXPLOREUM IN KIND

DONATIONS

Bill and Pat Moren

BOOKS/PAPERS/PAMPHLETS/

ABSTRACTS/MAPS

Ann and Chuck Blanchard
Cheri Cornell
Sigrid Degner
John and Ann Enright
Anna Passante
Sue Stoecker

FURNITURE/TOYS

Marv and Marion Hurias

CD/DVD/VIDEO/RECORDS/

TAPES

BUSINESS ARTIFACTS

PHOTOS AND NEWSPAPER

CLIPPINGS/PRINTS/POSTERS/

POSTCARDS

George Franks
Janice Jansen
Kevin Wester

ANTIQUE METAL & WOOD/

GLASS/FABRIC

Family of Jerry and Martha Bolz
In honor of great grandparents,
grandparents and parents
Mary Flierl
Trudie and Gary Kelly
Jackie Oleson



IN MEMORIAM

Tom Greisch

*Tom was a Charter Member of
the Society and served on the
Board of Directors and as
Treasurer*





Port Washington Historical Society

Legacy Society

Confidential Membership Form

The PWHS **Legacy Society** has been established as a way to honor and recognize those who have made a planned gift to the Port Washington Historical Society as a beneficiary in their will or trust, retirement account, charitable gift annuity or charitable trust, or life insurance policy.

Please fill out this form and return it to the *PWHS* office to confirm your membership. The information you provide will be held in strictest confidence.

HOW WOULD YOU LIKE TO BE RECOGNIZED IN THE **LEGACY SOCIETY**:

NAME (S): _____

ADDRESS: _____

PHONE/EMAIL: _____

☐ I/WE WISH TO REMAIN ANONYMOUS

HOW HAVE YOU INCLUDED THE *PORT WASHINGTON HISTORICAL SOCIETY* IN YOUR PLANS:

☐ BEQUEST IN MY/OUR WILL

☐ CHARITABLE REMAINDER TRUST (CRT) OR CHARITABLE GIFT ANNUITY (CGA)

☐ IRA BENEFICIARY

☐ LIFE INSURANCE BENEFICIARY

☐ REAL ESTATE

☐ STOCK

☐ OTHER _____

ADDITIONAL INFORMATION *PWHS* SHOULD KNOW:

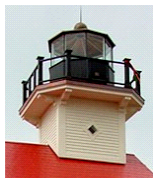
The current value of the gift is approximately (optional) \$ _____

Signature: _____ Date: _____

Spouse's Signature (If joint will): _____ Date: _____

Please return to:

PWHS Legacy Society P.O. Box 491 Port Washington, WI 53074



Port Washington Historical Society

P. O. Box 491
Port Washington, WI 53074-0491
www.portwashingtonhistoricalsociety.org

Upcoming Events

QUARTERLY MEETING

Wednesday, October 18, 7:00 pm

*Port Washington State Bank Lakeview Room
The Wilson House*

For a complete list of PWHS events, click here to visit:
www.facebook.com/PortWashingtonHistoricalSociety
or
www.portexploreum.com/calendar/

Click

1860 Light Station Closes Until Spring

Sunday, October 15

Winter Hours at the RC Begin

Monday, October 16, 1-4 Mon. & Thurs.

Halloween SPOOKTACULAR

Saturday, October 28, Port Exploreum

Closed for Thanksgiving

Thursday, Nov. 23, Port Exploreum & RC

Christmas on the Corner

Saturday, Dec. 2, Port Exploreum & RC

Member Holiday Gathering

Wed., Dec. 6, 5-7:30 pm, Port Exploreum

Closed for Christmas

December 24 and 25, Port Exploreum & RC

Closed for New Year's Day

Monday, January 1, Port Exploreum

January Quarterly Meeting TBA